



ETOC 2024

TOM 8.5.2024

PreO1 and PreO2



GENERAL MATTERS

- **ROCK AND ROCK FACES.** Yes, we have them. An effort has been made to include all clearly distinguishable ones on the map, but in some areas smaller ones have had to be left out due to the readability of the map. There is no exact minimum height of rock face or stone, but everything that stands out clearly has been described.
- **TOE Punch.** Competitors are responsible of Clearing the chips. There is grid for safety pin punching on the back side of the map in case the unit doesn't work (give sound, blink and show your punch on the screen). You can read more about the system on page: toe.yq.cz
- **Zero tolerance 4 m.** No exceptions. No controls over 100 m distance.
- **Timed controls:**
 - We have two marshals. One working with ANT and other with clock and pen. After the performance, the marshal will tell you the answers and the time/times. If not, please ask.
 - In case the competitor claims to have answered in a different letter than what is recorded: If both timekeepers are sure that they heard and recorded the answer correctly, answer stays. If even one of them is uncertain, it will be decided in favor of the competitor.



GENERAL MATTERS

- No oneway sections.
- Free punching order.
- First punch counts.
- Stony area with small dots consist stones mostly less than 50 cm. Area with triangles is typically bigger stones, some higher, some lower.
- Gray areas are not only bare rock. Most have at least some moss and some low grass here and there.
- Root stocks are not mapped and most of them are quite small.



PreO1

Race information / PreO 1

Distances:

| | |
|------------------------------|---------------------------------|
| Parking – Event Arena | 700-900 m |
| Bus stop – Event Arena | 400 m (Lines 6 and 7) |
| Event Arena – Quarantine | 50 m smooth gravel / grass |
| Quarantine – Start | 500 m asphalt |
| PreO course | 900 m smooth gravel, 20 m climb |
| Finish – Timed Controls | 250 m smooth gravel |
| Timed Controls – Event Arena | 1300 m asphalt/gravel |

1. PreO part with 32 tasks
2. Two timed controls with 3 tasks and 6 flags

First start 10:00 (at start line)

Max time for PreO is 123 min (O) / 133 min (P)

Quarantine closes 11:30

Toilet between PreO finish and time controls.

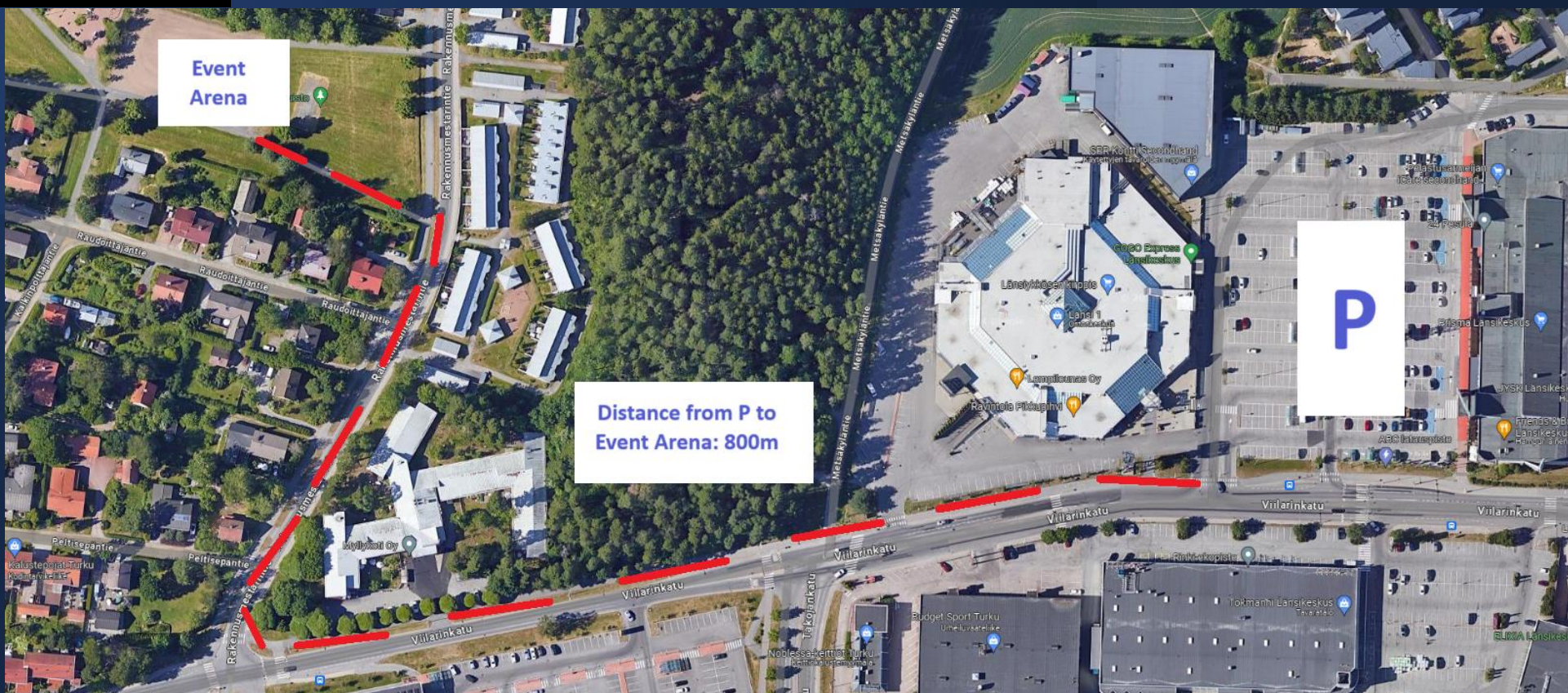


ETOC2024

European Trail

Orienteering Championships 2024

PreO1



PARKING

PreO1



ARRIVING & COMPETITION CENTER



PreO2

Race information / PreO 2

Distances:

| | |
|-------------------------------------|--------------------------------------|
| Parking – Event Arena | 50-200 m |
| Bus stop – Event Arena | 1300 m (Lines 6 and 7) |
| Event Arena – Quarantine | 50 m smooth gravel |
| Quarantine – Timed Control 1 | 150 m smooth gravel, 10 m climb |
| PreO, part 1 | 650 m smooth gravel, 15 m climb |
| PreO, part 1 finish to part 2 start | 350 m smooth gravel, downhill/uphill |
| PreO, part 2 | 450 m smooth gravel, 10 m climb |
| Finish – Timed Control 2 | 100 m smooth gravel |
| Timed Control 2 – Event Arena | 450 m smooth gravel |

1. Timed control 1 with 3 tasks and 6 flags
2. PreO part 1 with 19 tasks
3. Toilet and water available
4. PreO part 2 with 14 tasks
5. Timed control 2 with 3 tasks and 6 flags

First start 10:00 from the quarantine gate

Max time for PreO is 132 min (O) / 140 min (P)

Quarantine closes 11:30

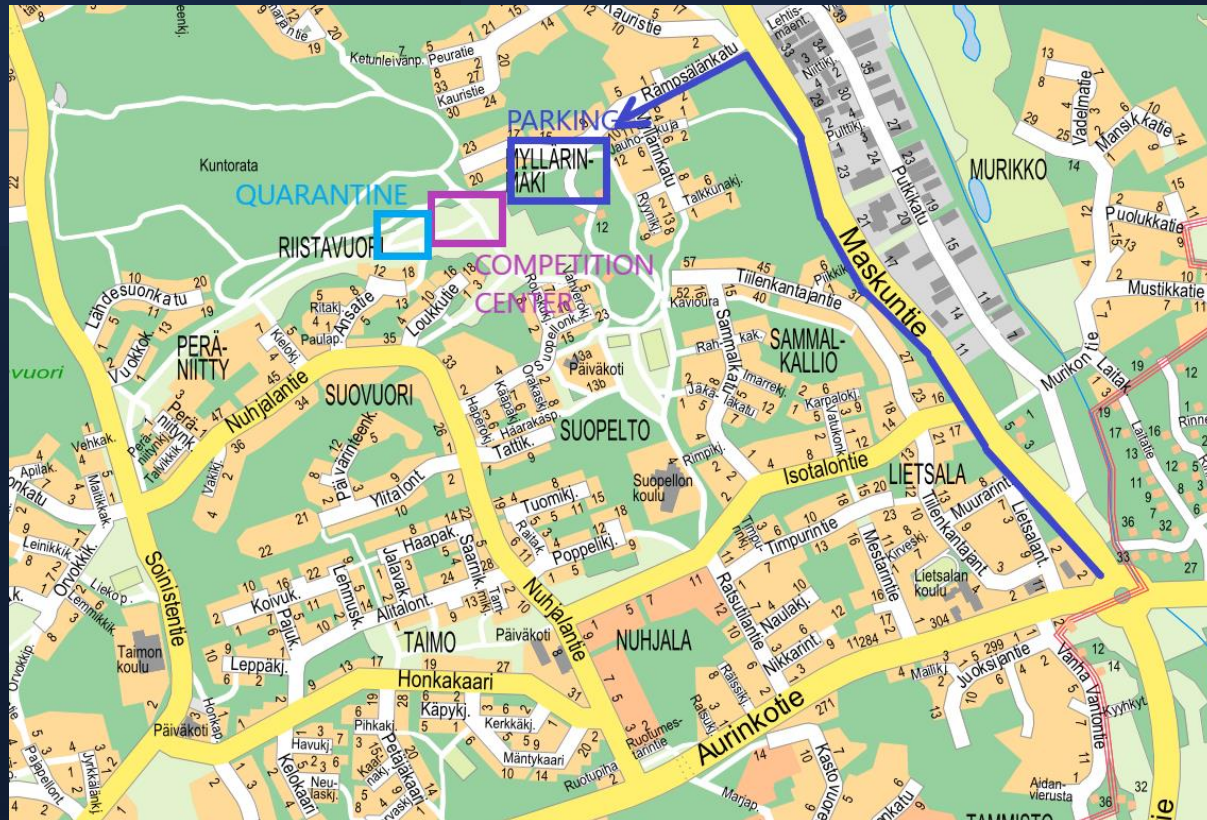
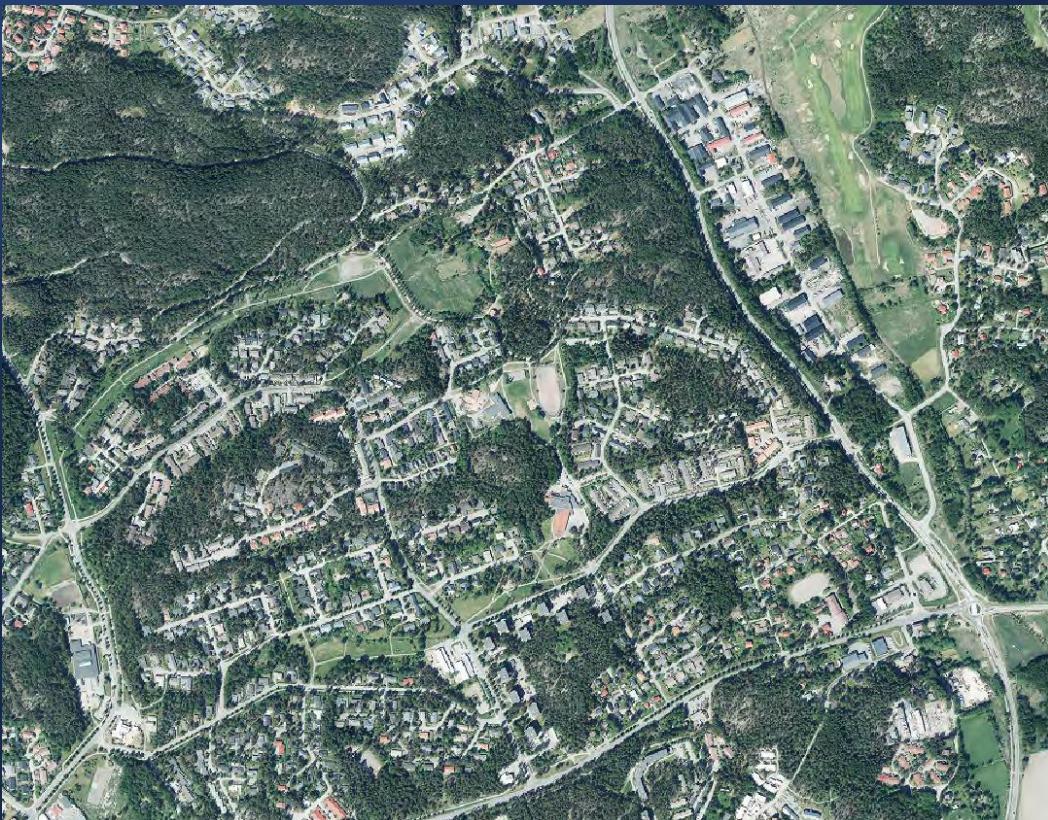


ETOC2024

European Trail

Orienteering Championships 2024

PreO2

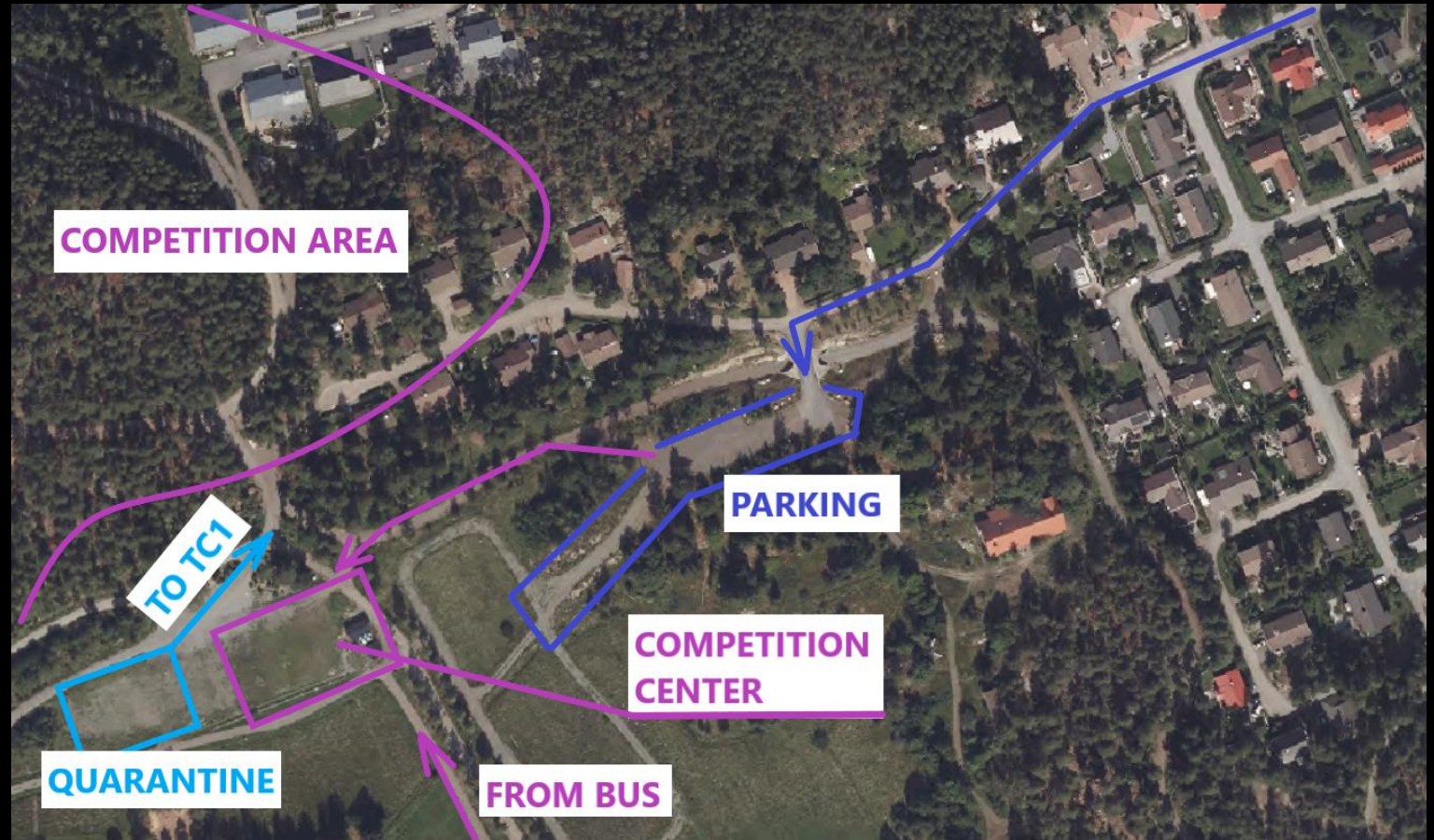


ARRIVING



COMPETITION CENTER:

PreO2



ALL STARTS FROM THE QUARANTINE GATE



Before the deadline for the relay team, we would like to know a bit more of information that could be important for team composition. At least if there will be any free choice of tasks for team members.

- There will be no choice tasks. Every competitor will their own 16 task PreO-course + Tempo stations

There was request to have disinfection liquid before timed stations (both PreO and Tempo) that there is no need to carry own.

- There will be disinfection liquid before timed stations
- How course setter can prove that the flags are in positions shown on answer map, but not in between them? This question applies for the tasks on prolonged features, e.g. spur or re-entrant, with several flags along it, for example PreO Model tasks 2 and 5. Can it be that true positions of the flags are around the position of interest and a competitor must guess the closest and least wrong flag as a correct answer?
- The location of the correct flag is as close to the correct location as we have been able to put it. However, we are talking about a few cents, not meters. The location has been determined based on all available information. We don't think that the best competitors will not have a problem where they have to choose the least bad of the bad options.

QUESTIONS AND ANSWERS



ETOC2024

European Trail

Orienteering Championships 2024

Were the symbols of the TempO model stations enlarged from 4000 to 3000 or were only the scale was different from 4000?

- Scale was 1:3000. Mapped to 1:4000 and printed to 1:3000. Control circles 6 mm.

Will there be clearer marking of the lines across paths where we are not allowed to go (if required)? "Stop" signs would be better than scrapes in the gravel.

- We will put tape to show where not to go.

At the model event competitors we're not provided with a punching record when they downloaded, contrary to IOF rule 23.6. Please confirm that this will be corrected in Preo1 and preo2.

- We don't provide printout at the PreO finish line, because there is timed station or stations after that. Info will provide the printout if competitor wants to have one.

QUESTIONS AND ANSWERS



| | | | | |
|-------|--|-----|--|----------|
| 10.00 | | +6° | | 2 (5) |
| 11.00 | | +6° | | 2 (5) |
| 12.00 | | +7° | | 2 (6) |
| 13.00 | | +8° | | 2 (6) |
| 14.00 | | +8° | | 3 (7) |
| 15.00 | | +8° | | 3 (8) |
| 16.00 | | +9° | | 3 (8) |
| 17.00 | | +9° | | 4 (8) |

Turku

10 PÄIVÄN SÄÄ

[Tuntiennuste](#)

| Ke 8.5. | To 9.5. | Pe 10.5. | La 11.5. | Su 12.5. |
|------------------------------|------------------------------|------------------------------|------------------------------|------------------------------|
| | | | | |
| Ylin: +10° Alin: +4° | Ylin: +9° Alin: -1° | Ylin: +12° Alin: +5° | Ylin: +13° Alin: +2° | Ylin: +14° Alin: +2° |
| 4 (10) m/s | 4 (9) m/s | 7 (14) m/s | 5 (12) m/s | 3 (9) m/s |
| 0 mm | 0 cm | 0,3 mm | 0 mm | 0,2 mm |
| Tuntiennuste | Tuntiennuste | Tuntiennuste | Tuntiennuste | Tuntiennuste |

WEATHER FORECAST