



ETOC 2024

TOM 10.5.2024

RELAY

RELAY

Race information / Relay

Distances:

Parking – Event Arena	50-200 m
Bus stop – Event Arena	800 m (Lines 6, 61 and 7)
Event Arena – Start	0 m
PreO course	800 m smooth gravel, 25 m climb
PreO – TempO stations	100 m smooth gravel, 10 m climb
TempO stations - Quarantine	100 m smooth gravel/asphalt
Quarantine – Event Arena	100 m asphalt

Event Arena: Kuparivuori Sports Centre.

1. PreO part with 16 tasks
2. Two TempO stations with 5 tasks and 6 flags
3. Third leg has one extra TempO station with 5 tasks and 6 flags

Mass start 10:00 (O) / 10:15 (P)

Max total time for PreO is 216 min (O) / 225 min (P)



RELAY

MASS START PROCEDURES

1. CLEARING TOE-CHIPS
2. PUNCHING START
3. ENTRY TO START AREA
4. ALL HAVE TO BE IN THE START AREA 5 MIN BEFORE MASS START
5. LINEUP FOR THE START, FOLLOW MARSHALS COMMANDS
6. MASS START AT 10:00 FOR O AND 10:15 FOR P



RELAY

CHANCE OVER

1. STARTING COMPETITOR WILL CLEAR TOE-CHIPS, PUNCH START AND ENTER THE CHANCE AREA
2. COMING COMPETITOR WILL RUN/ROLL INTO THE CHANCE AREA
3. COMING COMPETITOR TAKES THE MAP FROM MAP "FENCE".
CHECK THE NUMBER!!!
4. COMING COMPETITOR HANDS THE MAP TO THE STARTING COMPETITOR
5. COMING COMPETITOR WILL PUNCH AT FINISH, HANDS OVER THE CHIPS AND CONTINUES TO THE TEMPO-STATIONS



RELAY

TEMPO STATIONS

1. THERE WILL BE TWO TEMPO-STATIONS AFTER PREO COURSE
2. COMPETITOR GOES TO STATION 1 OR 2 DEPENDING ON FORKING.
MARSHALS WILL GUIDE YOU TO CORRECT STATION
3. THEN FROM STATION 1 TO 3 AND FROM STATION 2 TO 4
4. AFTER SECOND STATION COMPETITOR GOES TO THE QUARANTINE
5. THIRD LEG COMES FROM QUARANTINE TO LAST TEMPO-STATION.
COMPETITORS WILL COME IN REVERSE ORDER OF RESULTS. FIRST
OPEN CLASS AND THEN P CLASS.



RELAY

QUARANTINE

1. THERE IS NO-ONE IN THE QUARANTINE WHEN RELAY STARTS
2. LEG 1 GOES TO THE QUARANTINE AFTER TEMPO-STATIONS
3. LEG 2 GOES TO THE QUARANTINE AFTER TEMPO-STATIONS
4. WHEN LAST COMPETITOR OF PARTICULAR COUNTRY ENTERS THE QUARANTINE, HE/SHE RELEASES ALL HIS/HER TEAMMATES. GO TO MASRHAL AND TELL THAT YOU WANT OUT.
5. LEG 3 GOES TO THE QUARANTINE AFTER TWO TEMPO-STATIONS
6. THIRD LEG WAITS IN QUARANTINE UNTIL COLLED TO THE LAST TEMPO-STATION.



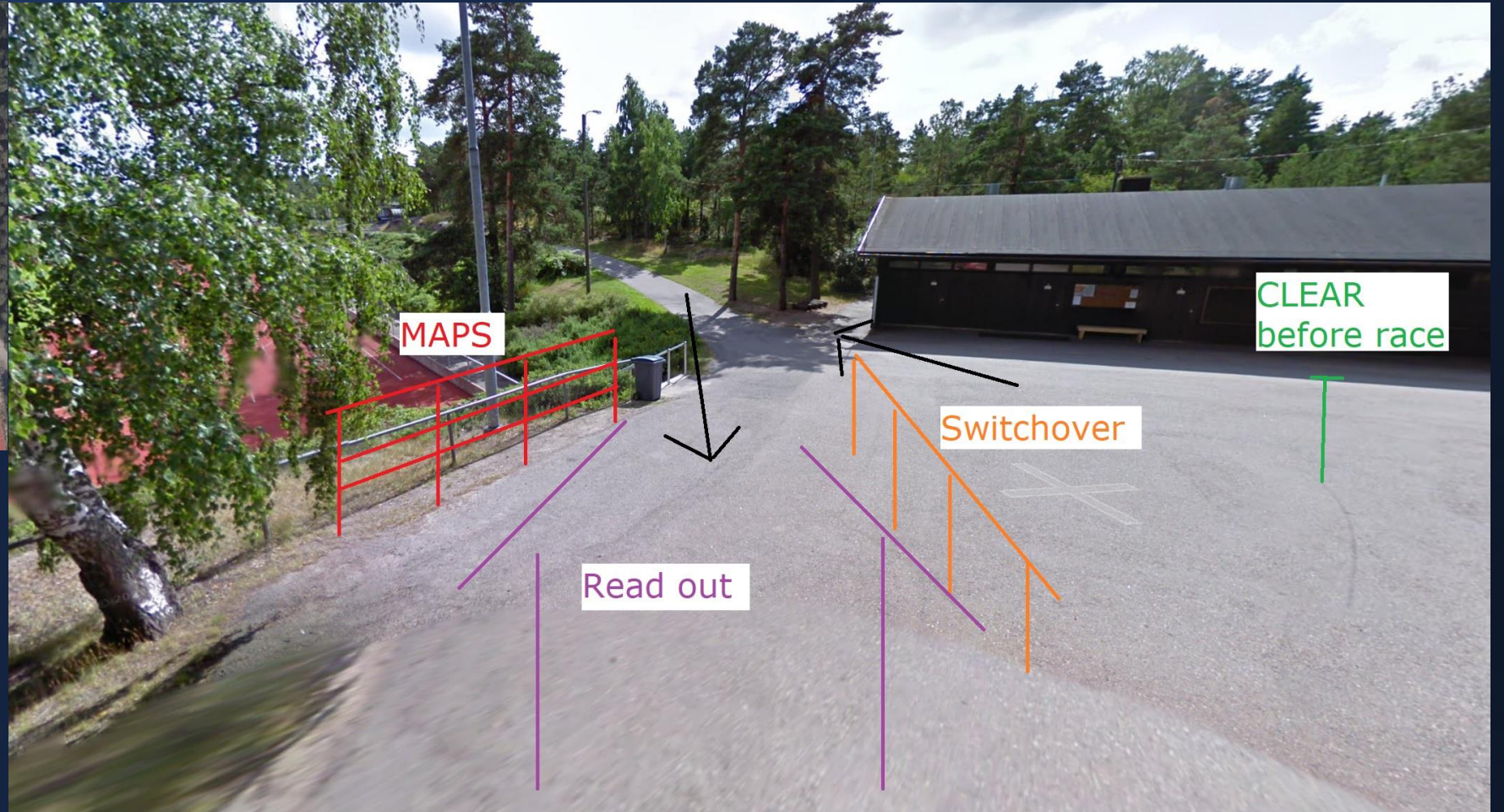
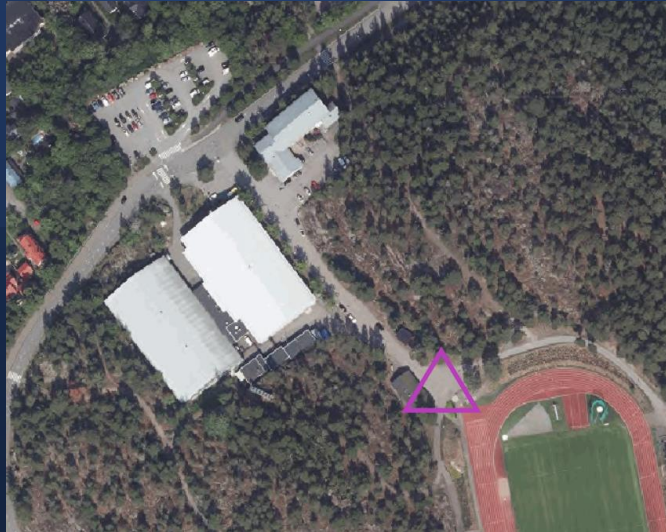
RELAY

OTHER MATTERS

1. OPEN CLASS HAS 216 MIN TOTAL TIME => TIME ENDS AT 13:36
2. P CLASS HAS 225 MIN TOTAL TIME => TIME ENDS AT 14:00
3. TOE-TIMING IS NOT USED FOR CONTROLLING TOTAL TIME

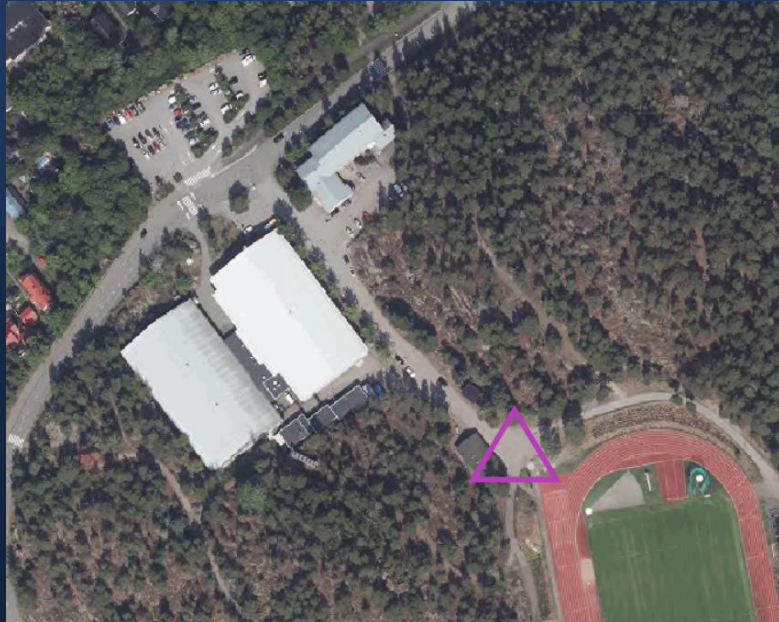


RELAY





RELAY





ETOC2024

European Trail

Orienteering Championships 2024

I am an accredited athlete for the competition and I will participate in Sunday's tempo. Are the model, preo1 and preo2 competition routes allowed to go through on Saturday? Is it permissible to go through the relay track on Saturday night after the protest time has expired (when the results are official)?

- All used competition areas are free from embargo after the competition in question is finished, results are final and last one of many complains and protests is resolved.

Will water and toilets be available in the relay quarantine?

- Several toilets. Water from the tap (take your own bottles).

Which team numbers on the bibs correspond with which of our entered teams?

- Numbers 1-11 are for P-class and 51-79 for O-class.

QUESTIONS AND ANSWERS



ETOC2024

European Trail

Orienteering Championships 2024

Please remind your team members of the principles of good practice during competition. Members of our Para team complained that in PreO 1 there was a situation where the representative of the Polish team regularly stood in front of a wheelchair during the competition in such a way that it was impossible to see the flags.

QUESTIONS AND ANSWERS



ETOC2024

European Trail

Orienteering Championships 2024

09.00		+7°		3 (6)	Tuntuu kuin +6° Selkeää ja poutaa
10.00		+9°		3 (7)	Tuntuu kuin +7° Selkeää ja poutaa
11.00		+10°		4 (9)	Tuntuu kuin +7° Selkeää ja poutaa
12.00		+10°		4 (10)	Tuntuu kuin +8° Selkeää ja poutaa
13.00		+11°		5 (11)	Tuntuu kuin +9° Selkeää ja poutaa
14.00		+11°		5 (12)	Tuntuu kuin +9° Selkeää ja poutaa
15.00		+11°		6 (12)	Tuntuu kuin +8° Selkeää ja poutaa
16.00		+11°		6 (12)	Tuntuu kuin +8° Melkein selkeää ja poutaa
17.00		+11°		6 (12)	Tuntuu kuin +8° Melkein selkeää ja poutaa

La 11.5.	Su 12.5.	Ma 13.5.	Ti 14.5.
Ylin: +11° Alin: +3°	Ylin: +11° Alin: +2°	Ylin: +18° Alin: +6°	Ylin: +19° Alin: +7°
6 (12) m/s	4 (8) m/s	3 (8) m/s	3 (8) m/s
0 mm	0 mm	0 mm	0 mm
Tuntiennuste	Tuntiennuste	Tuntiennuste	Tuntiennuste

WEATHER FORECAST